



北京师范大学 联合国际学院
BEIJING NORMAL UNIVERSITY · HONG KONG BAPTIST UNIVERSITY
UNITED INTERNATIONAL COLLEGE

Extended Study Programme

HKBU x UIC

2024/25

The Best Leverage



UIC International Development Office

ESP @UIC

What is the ESP?

The Extended Study Programme **ESP** is a brand-new initiative jointly set up by HKBU and UIC. This innovative and unique programme aims at providing an extended learning experience for undergraduate students from both institutions and to facilitate the student flows between two of the most beautiful and vibrant campuses in the Greater Bay Area. Leveraging the capacity of HKBU and UIC, students can dive into new environments with excellence in research, teaching and learning, explore their career opportunities in one of the economically most vibrant regions of the world and grow with experiences that go far beyond the classroom in the Greater Bay Area.

Who can participate?

All full-time undergraduate students from HKBU and UIC can apply during their 4 years study, however not in the first and final year to experience innovative teaching across the greater bay, explore their professional potential, immerse in the unique cultural setting of both locations and network with young people across cultures.



As the first full-scale cooperation in higher education between the Chinese mainland and Hong Kong, Beijing Normal University-Hong Kong Baptist University United International College (UIC) was jointly founded by Beijing Normal University (BNU) and Hong Kong Baptist University (HKBU). UIC is the first modern college in the Chinese mainland that upholds a liberal arts education, situated in Zhuhai city in the Guangdong-Hong Kong-Macao Greater Bay Area.



Mission

To develop a liberal arts college dedicated to producing well-rounded global talents



Character

To uphold academic meritocracy, language proficiency, national anchoring and international orientation



Strategic Positioning

To establish a liberal arts college rooted in excellence in undergraduate education and graduate programmes that highlight our strengths

Academics

Faculty members from more than 30 countries with rich international experience support the academic excellence of our students.

The College has attracted many tip-top scholars who together have nudged UIC into the nation's top 100 in the concentration of high-calibre talents.

Create your unique study plan with 15-21 units per semester from a wide array of courses offered by UIC's faculties/ schools and teaching units to make full use of your time on our campus.

The full course list will be available via the course selection system.

**During your on-boarding process you will receive guidance by the dedicated team of our Academic Registry.*

For more information, please visit https://ar.uic.edu.cn/current_students/student_handbook.htm



Career Development

Make full use of UIC's Career Development opportunities and get access to all resources after being enrolled. Check it out on <https://career.uic.edu.cn>.

Explore internship opportunities and get personal career advice by the CDC team.



Check out the most updated information on CDC's Website!

<https://career.uic.edu.cn/en/news/view/aid/334168/tag/bmccz>



Student Life

Where will you live?

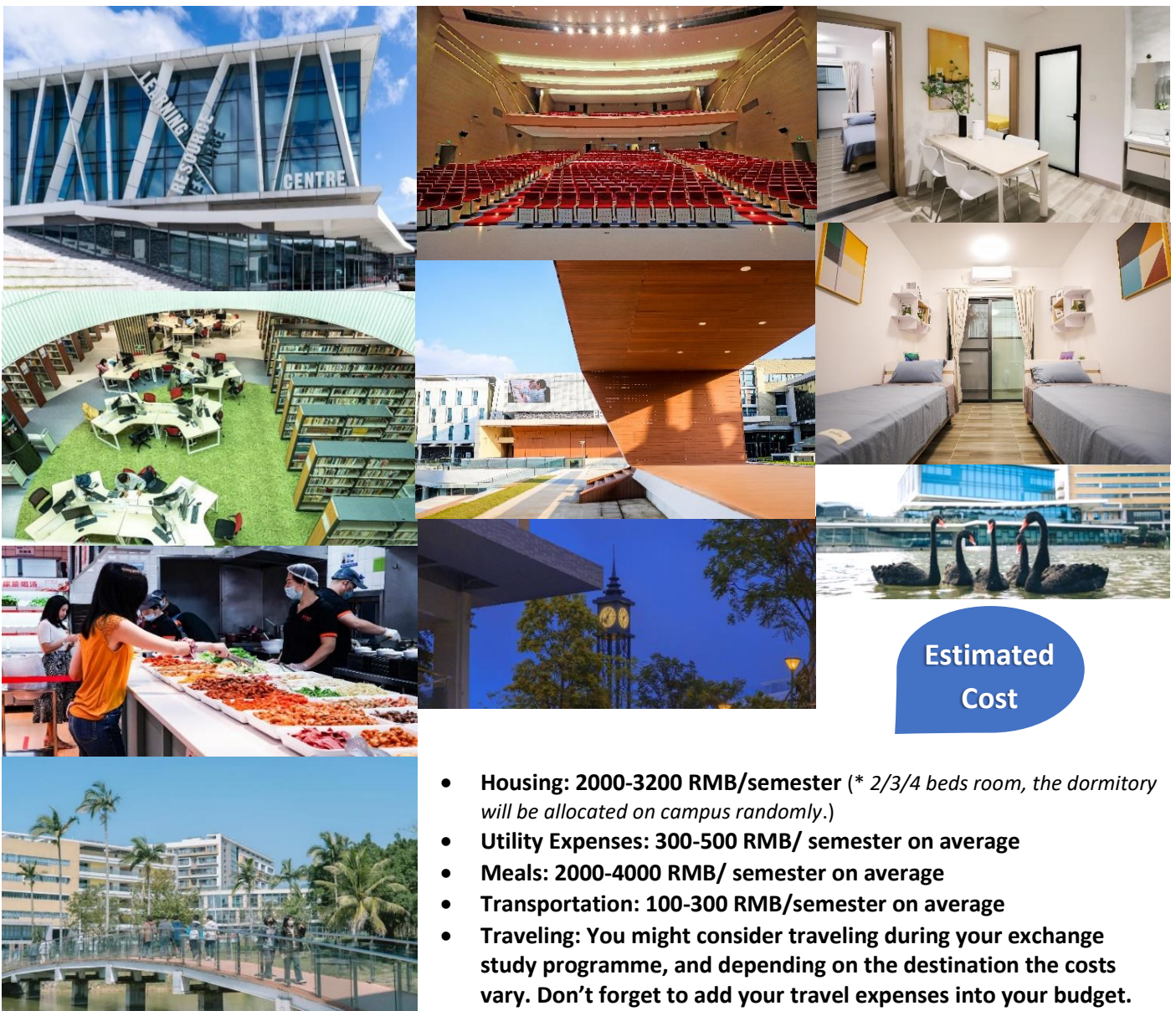
Undergraduate students will be accommodated in the Student Hostel Cultural Village on campus. UIC provides shared rooms (2/3/4 beds) to all students. On each floor, laundry room, pantry and self-study rooms are available. At UIC, the residential area consists of eight Halls with unique cultures, becoming students' second home.

Other facilities on campus

Cafeteria, Restaurants, Learning Resource Center (Library), Sports Complex, Bookshop, Clinic, Computer Center, Mini Banks, etc.

360° UIC campus Virtual Tour

<https://www.4dmodel.com/UICcode/code/?from=groupmessage&isappinstalled=0#/>



Estimated
Cost

- **Housing:** 2000-3200 RMB/semester (* 2/3/4 beds room, the dormitory will be allocated on campus randomly.)
- **Utility Expenses:** 300-500 RMB/ semester on average
- **Meals:** 2000-4000 RMB/ semester on average
- **Transportation:** 100-300 RMB/semester on average
- **Traveling:** You might consider traveling during your exchange study programme, and depending on the destination the costs vary. Don't forget to add your travel expenses into your budget.

Diversified Student Activities

IDO will be your first point of contact.

Exchange students will be able join a variety of activities together with all other inbound students: three-day orientation, experiential learning activities, traditional cultural field trips, company visits and Contemporary China lectures as well as cultural sharing workshops.



A house party to welcome exchange in and international students and to celebrate the Mid-Autumn Festival together. Making mooncakes, decorating lanterns, doing riddle games, having good food, sharing joyful brand-new chapter of life.



Natural Dye Experiential Workshop



Zhuhai Museum & Zhuhai Planning Exhibition Hall visiting



Cross-cultural event: Halloween night



Picnic in Haitian Park



Putuo Temple (Zhuhai) visiting



1

Fall Semester

(September to
January next Year)

Nominations- By HKBU

Early May, Every Year

Applications- By Students

15 May, Every Year

2

Spring Semester

(February to June)

Nominations- By HKBU

30 September, Every Year

Applications- By Students

15 October, Every Year

Expected Arrival Dates

- Spring Semester: First week of February
- Fall Semester: Last week of August

HOW TO APPLY

- HKBU will nominate students to UIC International Development Office in accordance with mutually agreed number of exchange places.
- HKBU students need to complete the application form and upload all required documents online via <https://p.uic.edu.cn/itraining/ido/login/index>.
- **For Hong Kong Citizenship:** All students must have “Mainland Travel Permit for Hong Kong and Macao Residents” and valid through the whole studying period.
- **For International Students:** For international passport holders, UIC IDO will assist the student to apply JW202 form for visa application. The process for applying approved JW202 form in mainland will take around one and a half months, please prepare enough time for this procedure.

Required Documents

1. Certificate of Enrollment.
2. Official Academic Transcript (The attainment of cGPA2.5 or above is required).
3. **For Hong Kong Citizenship:** One copy of your Hong Kong ID and Mainland Travel Permit for Hong Kong and Macao Residents.
4. **For International Students:** One copy of your personal information and visa page of your passport.
5. Copy of Insurance, please purchase adequate insurance in Hong Kong.

Contact IDO



International Development Office (IDO)

Address: T4-103 at Jindong Road 2000, Tangjiawan Zhuhai,
Guangdong Province, China

Email: international@uic.edu.cn

Website: <https://ido.uic.edu.cn/>

—

Dr. Katharina Yu, Director of International Development Office

—

Jessica Xiao, Senior Officer of International Development Office (Inbound)

Email: jessicaxiao@uic.edu.cn

Phone: 86-756-3620029

—

Kayla Huang, Officer of International Development Office (Outbound)

Email: xiaoyanhuang@uic.edu.cn

Phone: 86-756-3620058



北京师范大学 联合国国际学院
香港浸会大学

BEIJING NORMAL UNIVERSITY · HONG KONG BAPTIST UNIVERSITY
UNITED INTERNATIONAL COLLEGE